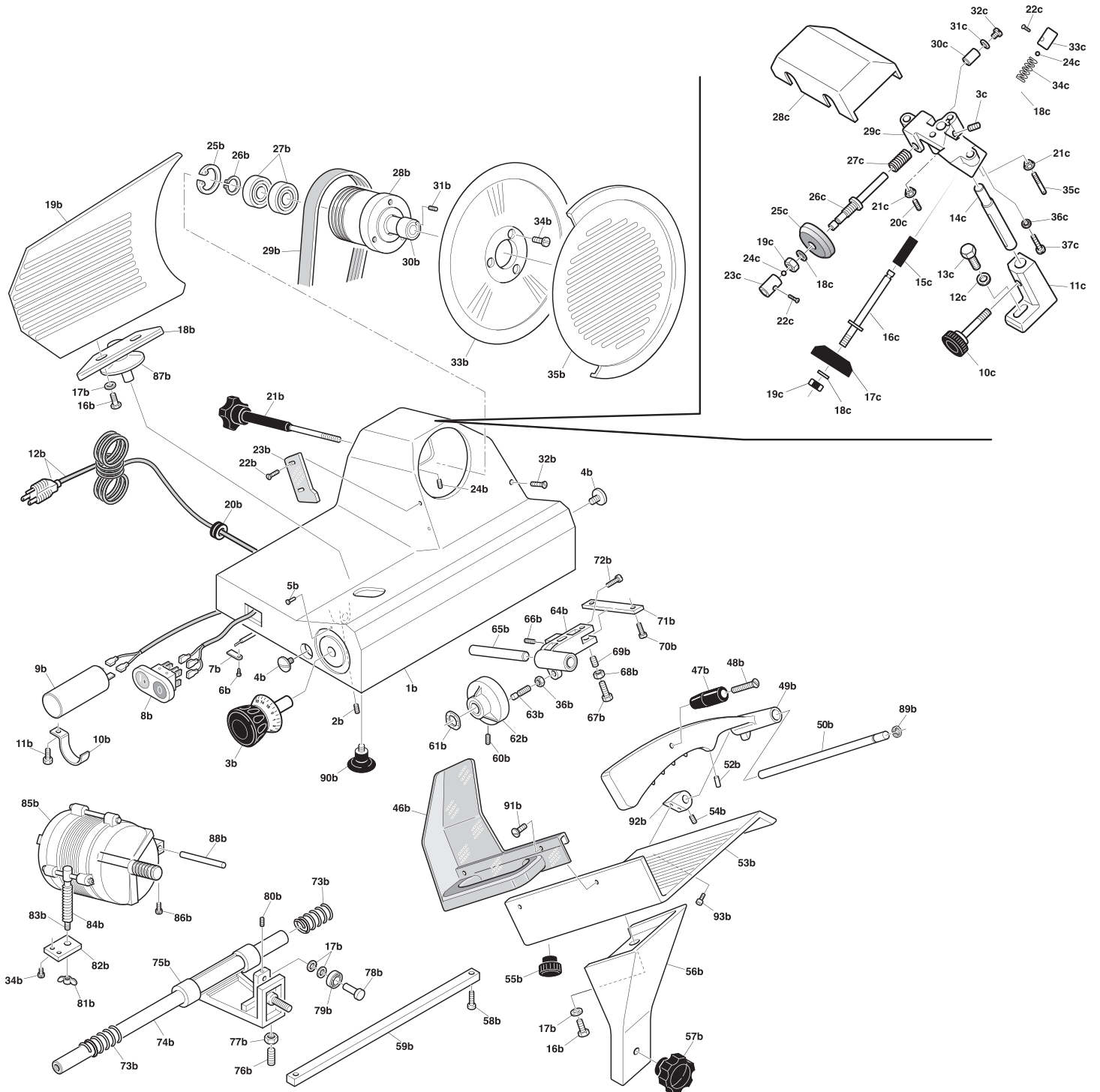


# Parts Breakdown

Model MS-IT-0300-I 21624



# Parts Breakdown

## Model MS-IT-0300-I 21624

Item No.	Description	Position	Item No.	Description	Position	Item No.	Description	Position
AG335	Case for 21624	B1	AG370	Astina Zampina for 21624	B50	AG408	Compass Blocking Presser for 21624	B89
AG336	Bead for 21624	B2	AG372	Stop (Bead PL.Zampin) for 21624	B52	AG409	Foot for 21624	B90
AJ356	Graduated Knob for 21624	B3	AJ367	Plate for 21624	B53	AG410	Flat Guard Screw for 21624	B91
AJ357	Screw Inox for 21624	B4	AG374	Bead for 21624	B54	AJ372	Block for 21624	B92
AG339	Copper Rivets for 21624	B5	AG375	Arm for 21624	B56	AJ373	Screw for 21624	B93
AG340	Self-Tapping Screw for 21624	B6	AG376	Arm Pommel for 21624	B57	AG411	Bead for 21624	C3
AG341	Thread-Holding Plate for 21624	B7	AG377	Screw for 21624	B58	AG412	Sharpener Pommel for 21624	C10
AG342	Switch for 21624	B8	AG378	Square Bar for 21624	B59	AJ374	Pipette for 21624	C11
AG343	Capacitor for 21624	B9	AG379	Bead for 21624	B60	AG414	Washer for 21624	C12
AG344	Condensator Clamp for 21624	B10	AG380	Corrugated Washer for 21624	B61	AG415	Screw for 21624	C13
AG345	Screw T.C. for 21624	B11	AG381	Cam for 21624	B62	AG416	Pin to Cave for 21624	C14
AG346	Cord for 21624	B12	AG382	Cone Bead Cams for 21624	B63	AG417	Compass for 21624	C15
AG347	Screw T.E. for 21624	B16	AG383	Complete Group for 21624	B64	AG418	Sharpening Pin for 21624	C16
AG348	Washer for 21624	B17	AG384	Pin Group for 21624	B65	18016	Omcan G Stone 50x08x06 for 21624	C17
AJ358	Sail Support for 21624	B18	AG385	Bead T.C. for 21624	B66	AG420	Washer for 21624	C18
AJ359	Sail for 21624	B19	AG386	Screw T.C. for 21624	B67	AG421	Nut for 21624	C19
AG351	Cable Pass for 21624	B20	AG387	Nut for 21624	B68	AG422	Bead for 21624	C20
AJ360	Blade Cover Tie Rod for 21624	B21	AJ368	Bead TC. for 21624	B69	AG423	Nut for 21624	C21
AG353	Self-Tapping Screw for 21624	B22	AG389	Screw for 21624	B70	AG424	Screw for 21624	C22
AG354	Parafette for 21624	B23	AJ369	Group Plate for 21624	B71	AG425	Button for 21624	C23
AG355	Bead for 21624	B24	AG391	Screw T.C. for 21624	B72	AG426	Ball for 21624	C24
AG356	Seiger for 21624	B25	AG392	Spring Scope for 21624	B73	33032	45x9x6 Sharpening Stone for 21624	C25
AG357	Seiger for 21624	B26	AG393	Round Bar for 21624	B74	AG428	Sharpening Pin for 21624	C26
AJ361	Bearing for 21624	B27	AG394	Telescope for 21624	B75	AG429	Spring Sharpener for 21624	C27
AG359	Spindle Pulley for 21624	B28	AG395	Telescope Bead PVC for 21624	B76	AG430	Canopy for 21624	C28
AJ362	Belt for 21624	B29	AG396	Nut for 21624	B77	AJ375	Sharpening Body for 21624	C29
AJ363	Spindle Pin for 21624	B30	AG397	Pin for 21624	B78	AG432	Compass for 21624	C30
AG362	Bead for 21624	B31	AJ370	Bearing for 21624	B79	AG433	Washer for 21624	C31
AG363	Screw T.C. for 21624	B32	AG399	Bead for 21624	B80	AG434	Screw for 21624	C32
13594	Blade 40-3-250 (19) for 21624	B33	AG400	Flap Nut (Corner) for 21624	B81	AG435	Button for 21624	C33
AG364	Screw T.P.S.V. for 21624	B34	AG401	Motor Plate for 21624	B82	AG436	Spring Sharpener for 21624	C34
AJ364	Blade Cover for 21624	B35	AG402	Motor Tie Rod for 21624	B83	AG437	Bead for 21624	C35
AG366	Flat Hand Guard for 21624	B46	AG403	Motor Spring for 21624	B84	AG438	Washer for 21624	C36
AJ365	Presser Knob for 21624	B47	AJ371	Ventilated Motor for 21624	B85	AG439	Screw for 21624	C37
AG368	Screw T.P.S.V. for 21624	B48	AG405	Screw for 21624	B86			
AJ366	Presser for 21624	B49	AG407	Motor Plug for 21624	B88			